



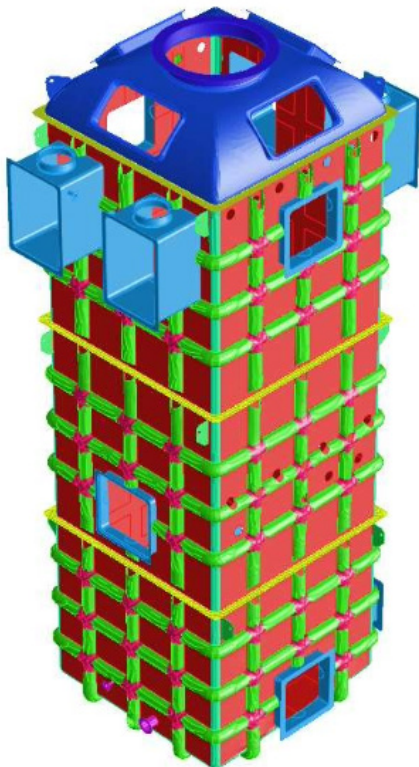
Dennis Southam
& Associates

CASE STUDY

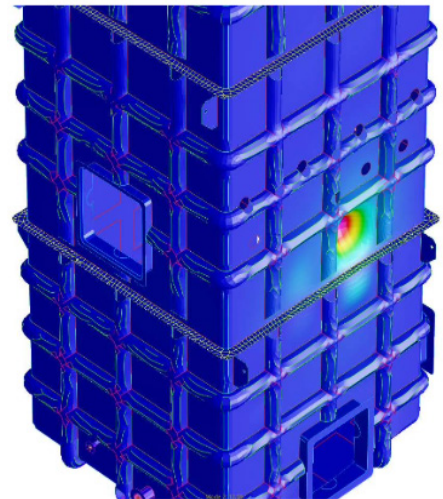
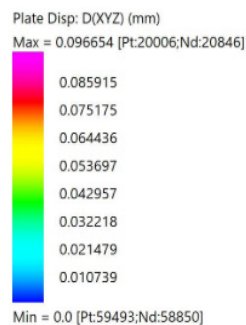
WESP DESIGN FEA ANALYSIS

Dennis Southam & Associates were engaged to design a Wet Electrostatic Precipitator (WESP) for a plant in Western Australia.

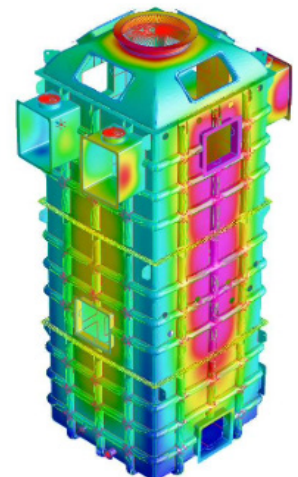
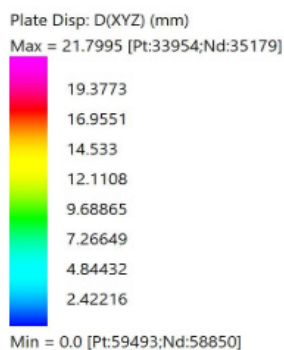
Utilising advanced Finite Element Analysis (FEA), our team designed the structure to comply with BS EN13121-3, while accounting for the challenging high wind and other complex operational loadings specific to the project site.



FEA Model



CC1 Buckling Factor



CC1 Displacements